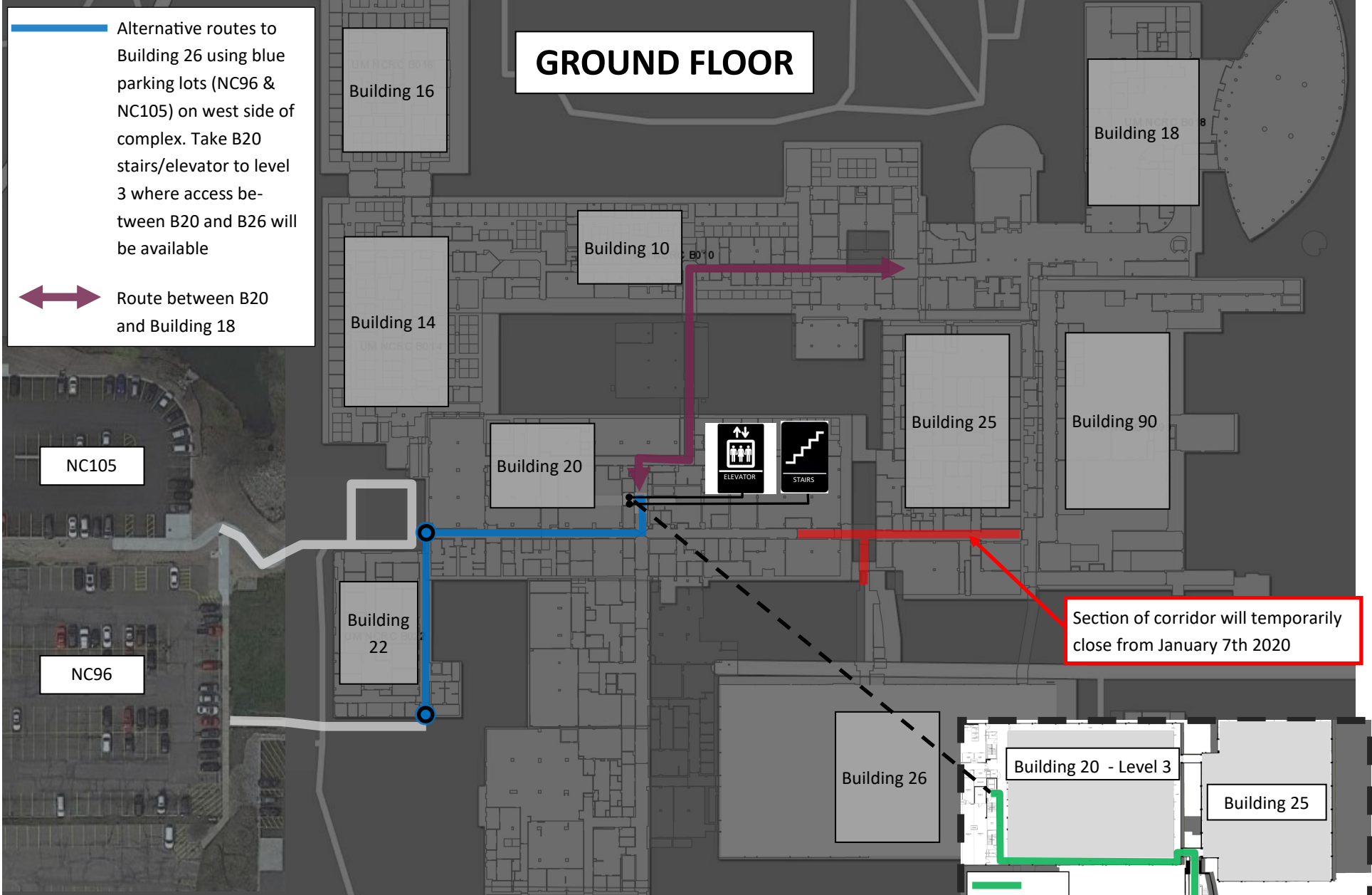


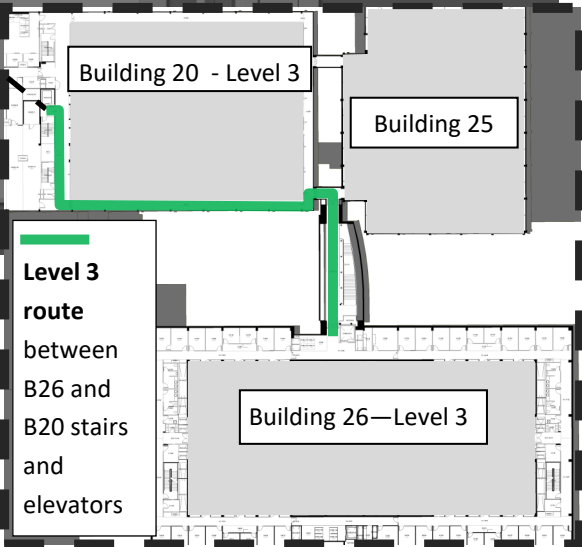
GROUND FLOOR

Alternative routes to Building 26 using blue parking lots (NC96 & NC105) on west side of complex. Take B20 stairs/elevator to level 3 where access between B20 and B26 will be available

↔ Route between B20 and Building 18



Section of corridor will temporarily close from January 7th 2020



Level 3 route between B26 and B20 stairs and elevators