



September 2012

M UNIVERSITY OF MICHIGAN
NORTH CAMPUS RESEARCH COMPLEX



momentUM
ncrc newsletter



The Biointerfaces Institute continues to grow at NCRC. This month and the next, we will turn the spotlight on faculty members and their labs that have recently moved here as part of the institute. We have recently completed a major space planning exercise and are happy to share some details.

And here's some news that many have been waiting for. We are excited to announce a new dining option at NCRC. We had promised a robust food service solution as our community grew, and here it is.

Welcome to a new school year!
[David Canter](#), Executive Director, NCRC

Biointerfaces Institute Continues to Grow with New Faculty Member Moves to NCRC

Takayama lab one of the latest additions to the multi-disciplinary program

Dr. Shuichi Takayama recently moved his large Biomedical Engineering lab to NCRC. With almost 20 post-doctoral researchers, Ph.D. students and undergraduate students, this lab reflects a large addition to the growing Biointerfaces Institute at NCRC. Dr. Takayama shared his thoughts in a recent interview.

About his lab's move to NCRC:

At the Biomedical Engineering department, we do a lot of collaborative research with the Medical School. The environment at NCRC, where there are both engineers and medical clinicians, biologists and scientists is a very natural fit for the type of research we do. The second advantage is the availability of contiguous space at NCRC. My lab used to be scattered over several buildings but now we are all together. Except for a small part of my lab, I have been able to consolidate all the different parts of my lab by moving to NCRC.



Unique aspects of NCRC valuable to his research:

At NCRC, we now share labs with researchers we have collaborated with before but were not in contiguous space. As our labs get to functioning status, we anticipate greater research synergies with our collaborators since we are located in the same space. What is unique about NCRC is the interdisciplinary research potential - we are right next to researchers from the Medical School and the Dental School, for example, and not just within the Biomedical Engineering department as before. There is so much that emerges from talking to people who happen to be close-by that I envision exciting inter-disciplinary research going forward. We already work with Dr. Krebsbach and Dr. Gary Smith's labs, and now we look forward to working with the cancer and cardiovascular researchers at NCRC.

New and Exciting Dining Options at NCRC

Long awaited food service finally arrives at NCRC

NCRC is excited to announce that [Opus One](#) has been awarded a University of Michigan contract to operate a cafeteria and catering services at the university's North Campus Research Complex. With nearly 1,600 people -- including U-M scientists, staff and students, and employees of 21 small private companies currently working at NCRC, and hundreds more to move there over coming years, a more robust dining option was imperative.



Opus One will open in NCRC building 520 beginning Monday, September 17, 2012. Food service will consist of Opus One Signature sandwiches, soups, prepared entrées, salads, side dishes, chips, hot and cold beverages, cookies, and brownies ([Click Here for Menu](#)). Throughout the months of September and October, service will continue to expand to include items such as specialty coffees, smoothies, ice cream, juices and sundries.

The full service cafeteria located in building 18 is scheduled to open in November, after the Patient Food and Nutrition Services team moves back to their newly renovated kitchen in the University Hospital.

Opus One has a green initiative and will be using eco-friendly disposable dishes, cutlery and beverage containers, and will accept both credit and debit cards as well as cash.

NCRC Facilities Framework Tool

Key drivers and assumptions to inform the next phase of facilities activation at NCRC

The facilities framework tool was recently developed to explore options for deploying the un-activated space at NCRC that best support the strategic goals of the university and the health system. The tool will support the leadership as they make a series of future decisions around the **best use** of this space and the **timing** of facilities activation.

Over the last 3 years approximately 61% of the available lab space at NCRC has been activated. Of that space, 24% is available to support future incremental growth; the remainder has been occupied or is committed to near term moves.



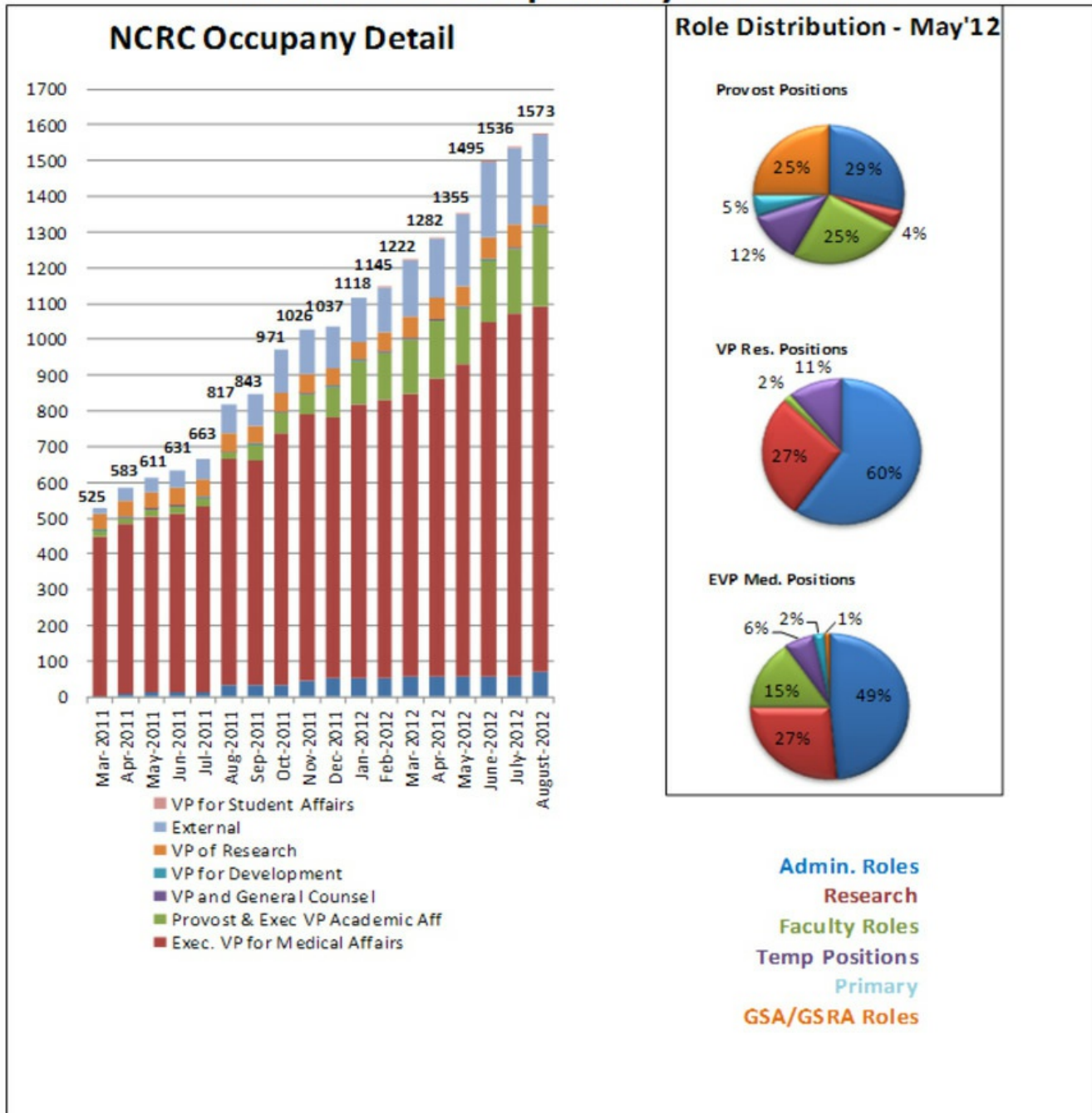
This planning effort was focused on efforts to describe a profile of the *average* wet lab faculty researcher with the NCRC Facilities Framework Tool. This profile was informed by reviewing experience in the medical school as well as by benchmarking peer institutions. The *profile* (e.g. lab size, number of support staff, mix of space type, grant support) provides the data needed to model how available space at NCRC and on the medical campus could support faculty increases at various annual growth rates.

NCRC Metric: Indicators of Progress



At the end of August 2012, there are 1,573 people working at NCRC, representing a 92% growth since a year ago. In August 2011, there were 817 people working at NCRC.

NCRC Occupancy Metrics



Executive VP for Medical Affairs

EVPMA continues to have the largest representation at NCRC and has experienced consistent growth since the NCRC opened. As of August, 2012 the number of employees has reached 1,023.

External Staff

In just seven months staff from external groups has grown from 126 to 196 employees.

Provost and Executive VP of Academic Affairs

As of August 2012 this department employs 221 people at NCRC, compared to 119 employees seven months ago.

VP of Research

VP of research has had a stable and consistent presence at the NCRC since the beginning, currently at 55 employees.

Pat Holden
Tel: (734) 936-3387
Fax: (510) 765-4321
Email: holdenp@umich.edu

[Click to view this email in a browser](#)

If you no longer wish to receive these emails, please reply to this message with "Unsubscribe" in the subject line or simply click on the following link: [Unsubscribe](#)

NCRC Marketing and Communications
2800 plymouth road
ann arbor, Michigan 48109-2800
US

[Read](#) the VerticalResponse marketing policy.

