

# NCRC Fire Sprinkler Safety

Nearly all the buildings at NCRC have automatic sprinkler protection. Sprinklers are designed to activate directly over a fire when the heat at the ceiling exceeds a pre-determined temperature. The liquid in the glass bulb expands, breaks the tube, and water will begin to flow. Contrary to popular belief sprinklers do not turn on when you open a fire alarm pull station. They also do not all come on at the same time (only the sprinkler closest to the fire will activate.) 99% of all fires are successfully controlled by the activation of five or less sprinkler heads. The following tips will help ensure the fire sprinklers in your area are ready to respond in the event of a fire:

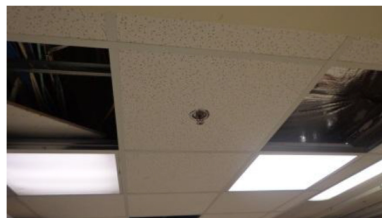
- Items should never be hung from sprinkler heads or sprinkler piping to prevent accidental activation.



- Items should never be stacked closer than 18 inches below the sprinkler heads so that the water plume can properly develop.



- Missing ceiling tiles can delay activation of automatic sprinklers in the event of a fire and should always be reinstalled right away.



Automatic sprinklers are always on duty to save lives and protect valuable research. Any questions regarding automatic sprinklers can be directed to [ncrcfeedback@umich.edu](mailto:ncrcfeedback@umich.edu).